

DATA SHEET

Art.nr.:
QB1WM

ONEPOLE PRO Angled Footplate Bracket 90deg

QB1WM

Net Weight

2,82kg

Gross Weight

2,96kg

Net Dimension

241x222x112mm

Gross Dimensions

255x250x120mm

Material

Powder-coated searesistant aluminum

Surface Treatment

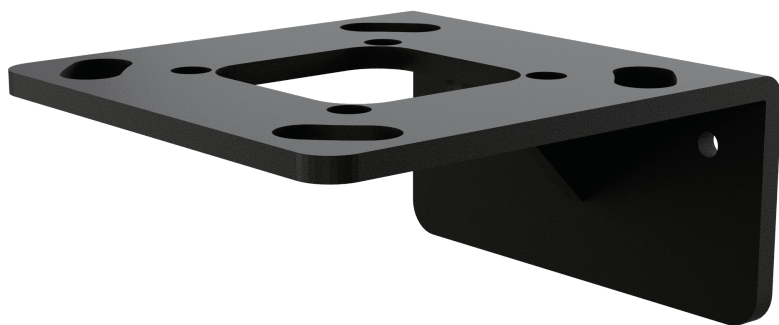
Powdercoated ISO 12944, Category C4

Accessories

4 pcs. M20-60 bolt + nuts.

8 pcs. M20 Washer.

8 pcs. M20 Nylon washer.



COMPLETE
EV INFRASTRUCTURE

Data sheet | 2024 | www.onepole.no

PRODUCED AND DESIGNED IN NORWAY 