

# DATA SHEET

Art.nr.:  
Q9MT2

## ONEPOLE PRO Roof Cover Uno 350x600 (Halfcover)

Q9MT2

### Net Weight

2,215kg

### Gross Weight

2,480kg

### Net Dimension

608x390x29mm

### Gross Dimensions

610x396x32mm

### Material

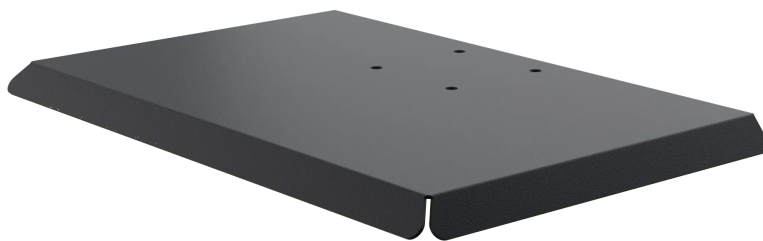
Powder-coated searesistant aluminum

### Surface Treatment

Powdercoated ISO 12944, Category C4

### Accessories

4 pcs. M5x20 UH.



COMPLETE  
EV INFRASTRUCTURE

Data sheet | 2024 | [www.onepole.no](http://www.onepole.no)

PRODUCED AND DESIGNED IN NORWAY 